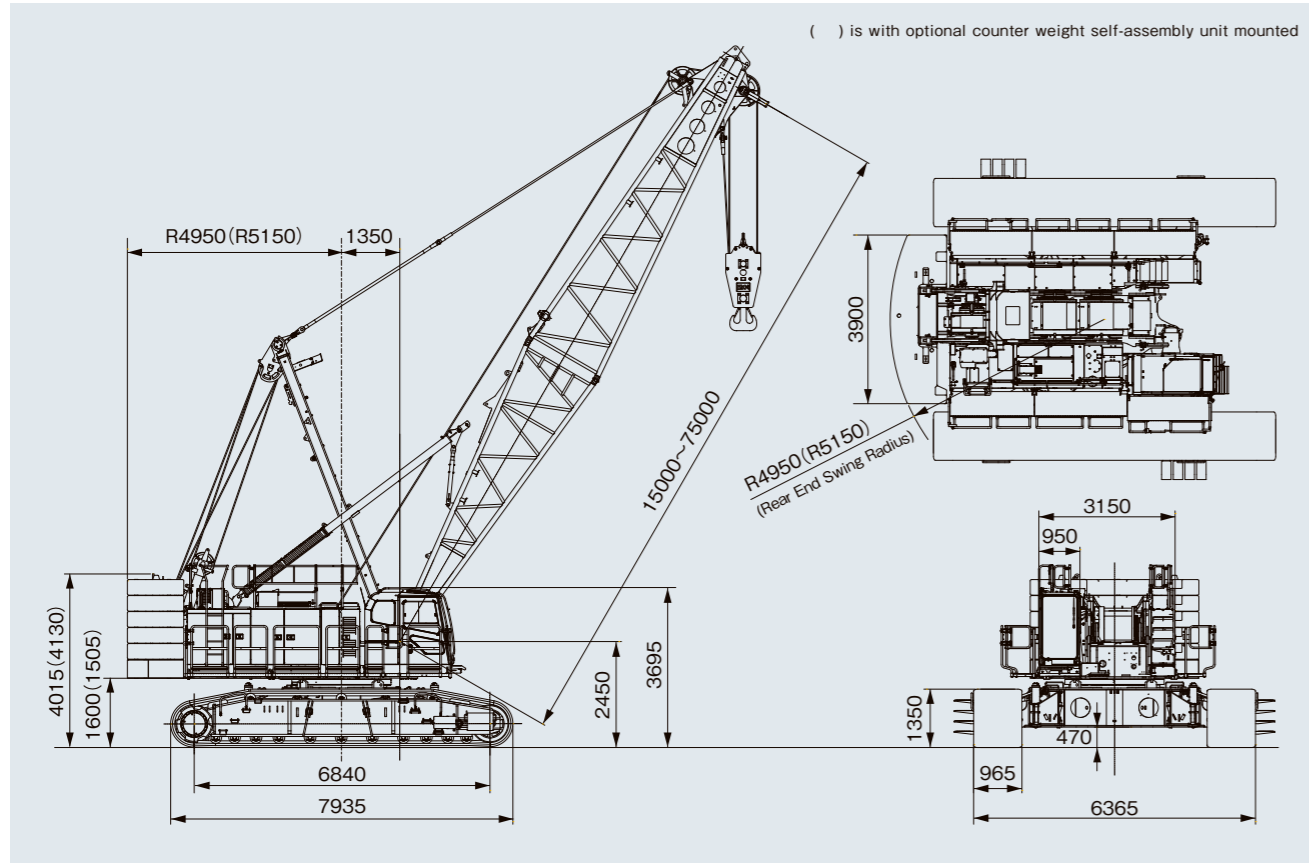


■ General dimensions

Units: mm



■ Specifications

| Model                    |                                              | SCX1200-3                      |                                         |
|--------------------------|----------------------------------------------|--------------------------------|-----------------------------------------|
| Application              |                                              | Liftcrane                      | Clamshell                               |
| Max. lifting capacity    | t × m                                        | 120 × 5.0                      | —                                       |
| Basic boom length        | m                                            | 15                             | 15                                      |
| Max. boom length         | m                                            | 75                             | 27                                      |
| Crane jib length         | m                                            | 10~28                          | —                                       |
| boom + crane jib length  | m                                            | 63 + 28                        | —                                       |
| Rope line speeds *1      | Front/rear main drum (rated with 12 t load)  | m/min                          | 110 (45)                                |
|                          | 3 <sup>rd</sup> winch (rated with 12 t load) | m/min                          | 95 (30)                                 |
|                          | Boom hoist drum                              | m/min                          | 44                                      |
| Swing speed              | min <sup>-1</sup> [rpm]                      | 1.8 [1.8]                      |                                         |
| Travel speed high/low *2 | km/h                                         | 1.5 / 0.9                      |                                         |
| Gradeability             | % [°]                                        | 30 [17]                        |                                         |
| Bucket capacity          | m <sup>3</sup>                               | —                              | 2.5                                     |
| Allowable gross weight   | t                                            | —                              | 10                                      |
| Max. digging depth       | m                                            | —                              | 36                                      |
| Engine                   | Make & model                                 | Cummins B6.7 (EU Stage V)      |                                         |
|                          | Max. output                                  | kW/min <sup>-1</sup> [PS/rpm]  |                                         |
| Ground contact pressure  | kPa [kgf/cm <sup>2</sup> ]                   | 91 [0.93]                      | 93 [0.95]                               |
|                          |                                              | w/basic boom, 120 t hook block | w/basic boom, 2.5 m <sup>3</sup> bucket |
| Operating weight *3      | t                                            | 122                            | 126                                     |
|                          |                                              | w/basic boom, 120 t hook block | w/basic boom, 2.5 m <sup>3</sup> bucket |

Notes: 1. Rope line speeds vary under load and operating conditions (\*1). 2. Travel speed is based on flat, level and firm supporting surface with no load and 15 m basic boom (\*2). 3. Handrail (folding type), with catwalk (\*3).

- We are constantly improving our products and therefore reserve the right to change designs and specifications without notice.
- Units in this catalog are shown under International System of Units (SI). ( ) indicates conventional units.
- Illustrations may include optional equipment and accessories, and may not include all standard equipment.
- Standard equipment and accessories may vary by country and region.
- Always refer to the Operator's manual before operating the crane.

Sumitomo Heavy Industries Construction Cranes Co., Ltd. has been abbreviated as "HSC" throughout this catalog. "HSC CRANES" is a brand of Sumitomo Heavy Industries Construction Cranes Co., Ltd.

Address inquiries to :

Sumitomo Heavy Industries Construction Cranes Co., Ltd.  
 9-3, Higashi-Ueno 6-chome, Taito-ku, Tokyo 110-0015, Japan  
 Phone: 81-3-3845-1387 Facsimile: 81-3-3845-1394  
<https://www.hsc-cranes.com>

Printed in Japan  
 2406®01H.EA396



**SCX  
1200-3**





# Progress for Tomorrow Safer and Cleaner Today

Making jobsites, society and the world better is why we continually update our machines. The new SCX1200-3 for tomorrow represents HSC's underlying inspiration.



## SCX 1200-3



Photos may include optional items.



### New 12.1-inch Monitor **Touch Monitor**

User-friendly and extraordinary safety with large, touch-screen monitor

### EU Stage V Compliant Engine **Eco & Clean**

World-leading low gas emissions and superb efficiency from innovative, eco-friendly power

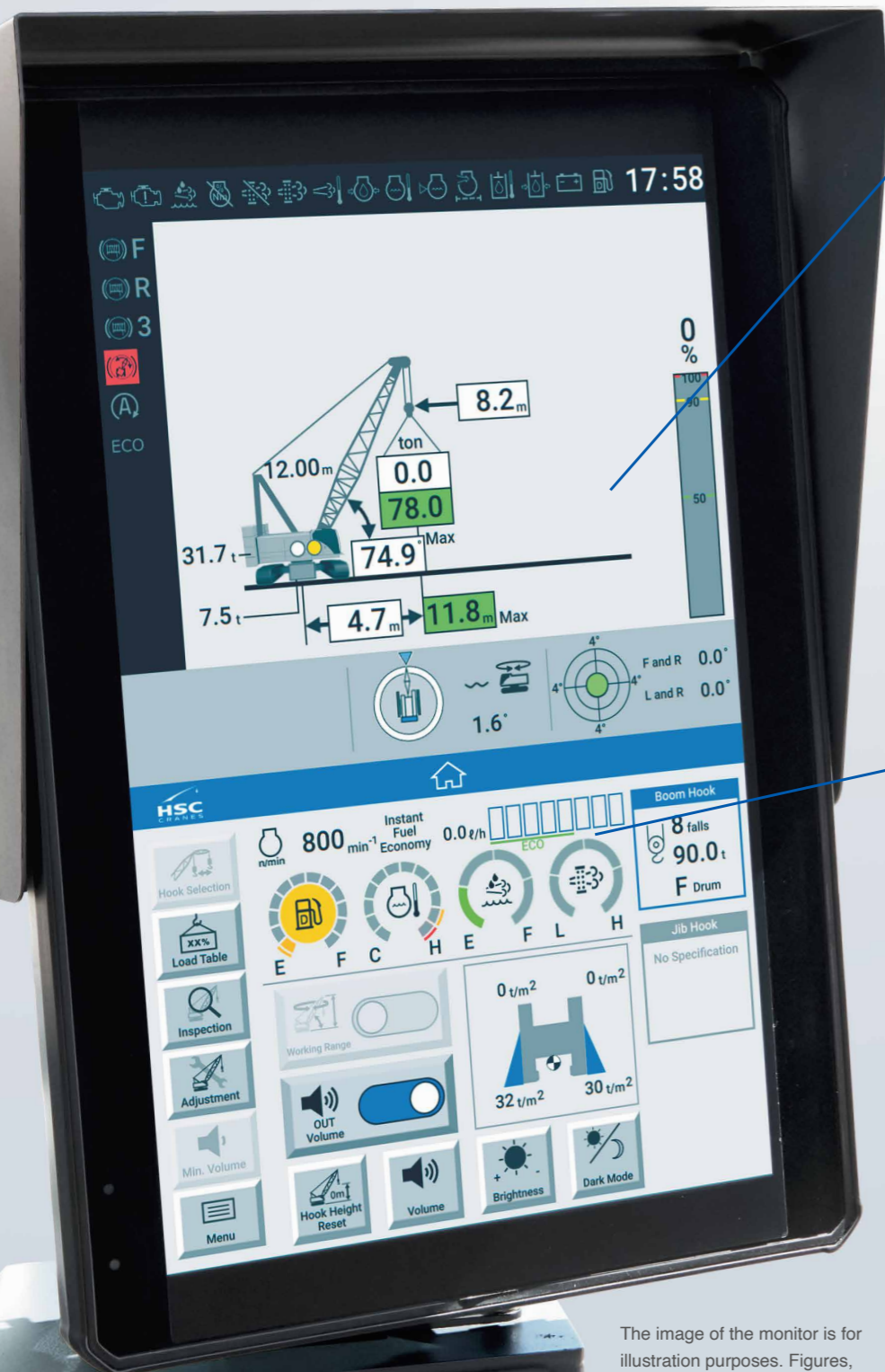




New monitor designed for user-friendly operations and safety.

# CONTROL SAFETY

The new monitor with moment limiter (M/L) provides smooth control with outstanding touch-screen usability, with the large 12.1-inch display ensuring excellent visibility. User-friendly operational safety is a key design element of the new monitor.



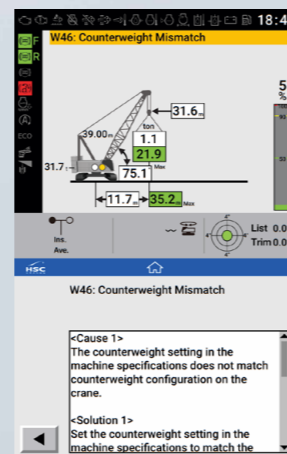
### Touch panel for intuitive control

Simply follow the leads on the screen to intuitively select functions and enter parameters. The screen layout ensures faster, more accurate control for even safer operations.



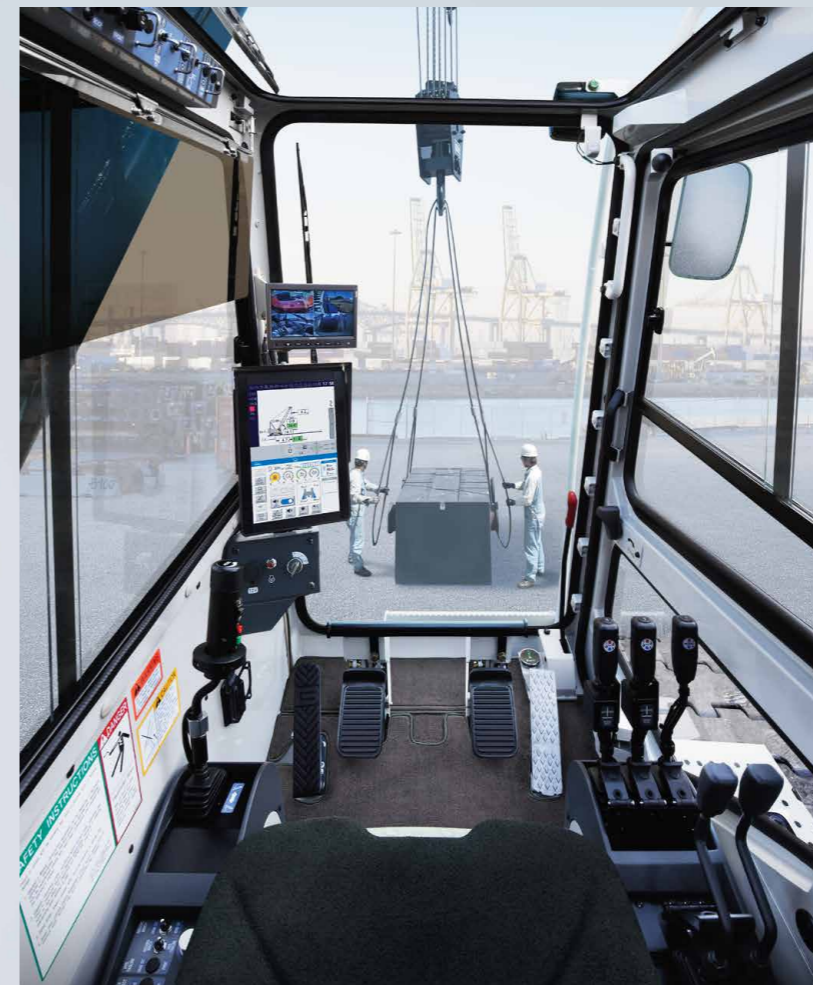
### Greater operating margin with data-rich display

Essential machine data can be viewed instantly with the graphical displays. Key information can be displayed in full, and interactive data communication assists operators in ensuring work is kept safe. Every aspect of the layout is designed for safety, like simply tapping warning icons to bring up more details.

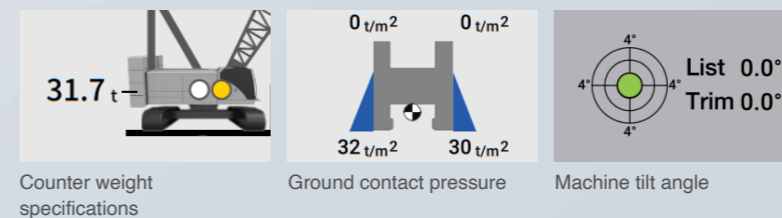


Example of warning message

The image of the monitor is for illustration purposes. Figures, values and other details may differ to the actual product.



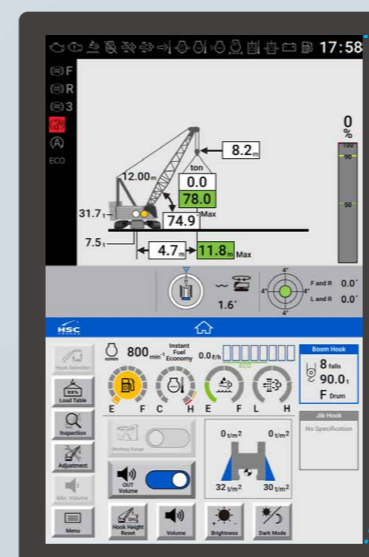
### Key data at a glance – graphical display of crane collapsing risk for greater stability



Counter weight specifications

Ground contact pressure

Machine tilt angle



8-inch monitor of previous model

225% area ratio

### Large 12.1-inch monitor

Frequently viewed data is organized at the top of the large portrait-mode monitor. The widescreen layout provides abundant meter info and operating conditions, giving operators both a multi-functional, and multi-display design.



### More comfortable operator seat

The operator's seat provides superior comfort—the lower headrest caters to operators wearing helmets, while a new seat heater further increases comfort during work.

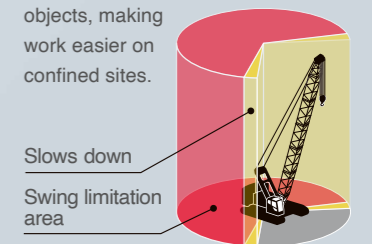


### Insulated roof window glass

New insulating glass has been used for the roof window to shut out more than 90% of UV and mid-infrared light. This helps to prevent sunburn and ensure a more comfortable working space by limiting the rise in temperature.

### Swing restriction unit OPTION

Features a swing range alarm and automatic stop function. This option is designed to reduce the risk of accidents involving contact with objects, making work easier on confined sites.



Slows down  
Swing limitation area



EU Stage V compliant engine for a cleaner tomorrow.

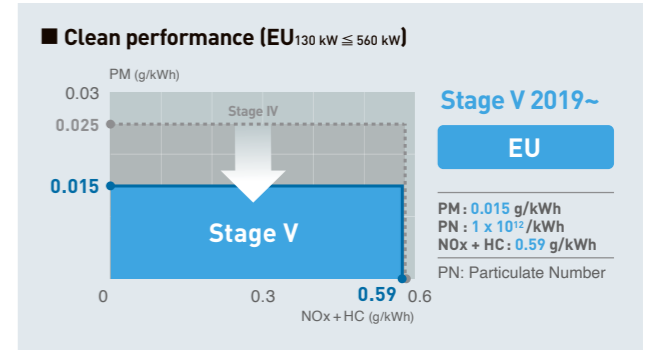
# ADVANCED ECOLOGY

Powered with an EU Stage V compliant clean engine designed for world-leading eco-friendly operation. Outstanding clean-running performance and greater efficiency for lower CO2 emissions help build a more sustainable society and a cleaner tomorrow.



## World-leading crane now even cleaner

The combination of the efficient clean-running engine and advanced ATS system simultaneously achieves superior operating efficiency, high level of power and the world highest standard exhaust gas emissions.



Stage V includes newly proposed limits on particle number.

## ATS system (exhaust gas after treatment system)

An ATS system is included, featuring a ceramic filter and Urea SCR for after treatment of PM and NOx in the exhaust gas. The system gives the engine high-efficiency combustion as well as outstanding fuel efficiency and clean exhaust gas.

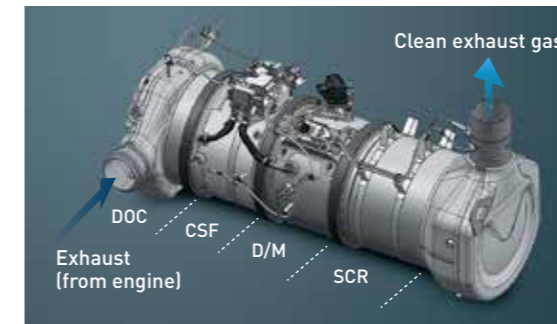
## Designed for ease of maintenance

The elimination of EGR makes engine maintenance easier and also means the fuel filter needs to be replaced less often. A large Urea tank has also been used for longer refilling intervals.

## Compatible with biodiesel

The engine can also run on biodiesel and other BDF or HVO.

Note: Use HVO that meets European specification EN15940. BDF: Bio Diesel Fuel HVO: Hydrotreated Vegetable Oil Contact our distributor for more details.



\* Use AdBlue® aqueous solution required for the Urea SCR (or a urea aqueous solution that complies with JIS or ISO standards). The SCX1200-3 requires AdBlue® to be refilled once every two times the machine is refuelled. AdBlue® is a registered trademark of the German Association of the Automotive Industry.

**PM down another 25%**

Compared to models with previous engine

**Fuel efficiency up 5%  
CO2 also down 5%**

**Engine power improved by approx. 4%**

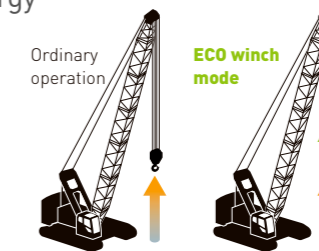
Compared to models with previous engine

## Other eco-friendly technology to save energy



### ECO winch mode

Light loads involving only hook operations benefit from ECO winch mode for high-speed hoisting and lowering while maintaining low engine speeds.



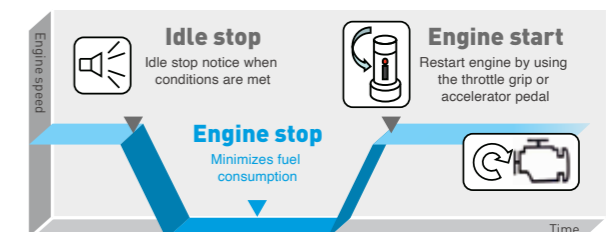
Minimal fuel consumption and high-speed winching with light loads

Automatically goes to ECO winch mode if the switch ON and required conditions are present (hook-only operation, low engine speed).



### Auto idle stop function

Auto idle stop function included as standard to automatically stop the engine idling unnecessarily, which helps reduce fuel wastage during work.





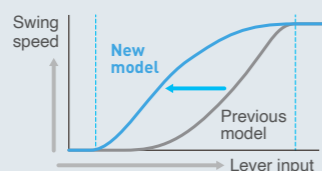
High-precision operations made smooth and easy.

# PERFORMANCE

The SCX1200-3 is designed with ample performance capability to deliver outstanding operating precision and efficiency. Jobs are smoother and easier with the increase in swing response.



Comparison of swing response



## Better swing response

Play in the swing lever has been further reduced, thereby improving movement when initially responding to lever input, and providing better swing response overall. This makes it easier to adjust positions and keep the boom stable, while less lever input also helps to reduce operator fatigue.

Note: Only for armchair lever.



## A high-rigidity boom for the toughest jobs

Both the boom foot width and boom width, as well as the bracing strength, have been increased to improve the strength of the boom itself. This helps to deliver advanced stability during work, to reduce side deflection and twisting throughout the front of the crane, and to make positioning loads quicker. A mast system has been employed to improve operating response.



## Front and rear winches

The standard 12 t-rated line pull winch is designed to cater to heavy duty work and simultaneous movements. Using this in tandem with the optional brake results in a better operating feel and excellent operating performance.

### 3<sup>rd</sup> winch OPTION

Installing a 3<sup>rd</sup> winch (with brake) also allows handling of casing drivers.



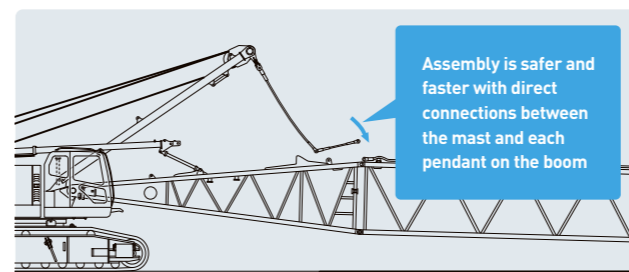
## Centralized control dials

In addition to hoisting, lowering, swinging, and boom speed control, the centralized layout makes easy to synchronize primary and auxiliary operation.

Designed for intelligent and economic transportation.

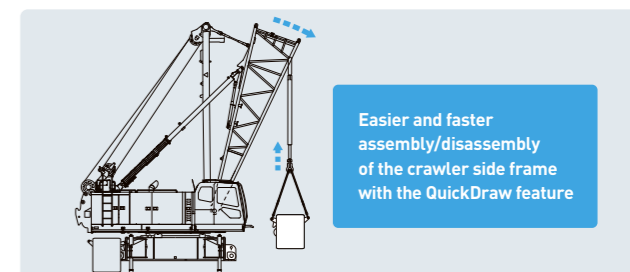
# SMOOTH ASSEMBLY

Providing both precision crane capabilities and intelligent transportation potential. Superior disassembly and assembly underpins intelligent transportation that yields cost reductions, further enhancing potential on any job site.



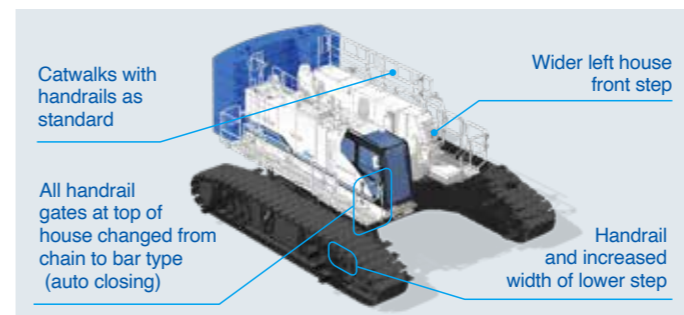
## Mast system and similarly shaped counter weights

The mast system with upper spreader structure can be lowered to enhance pendant rope joint work and the boom assembly process. Similarly shaped counter weights also enhance the assembly process, resulting in outstanding setup and safety.



## QuickDraw OPTION

QuickDraw is available that allows self-installing/removal of heavy crawler side frames. This feature allows assembly with smaller helper cranes handling the counter weights (up to 9 t).







## Safer and smoother access

Catwalks with handrails are now included as standard. Other changes to further enhance accessibility include a handrail added to the lower step, wider front step on the left of the house, and the use of bar type gates. Better accessibility ensures the utmost safety for all personnel working on job sites.

Note: Catwalks with no handrails are also available.

## Reduction counter weight specification OPTION

A reduction counter weight specification is available as an optional extra to provide added flexibility for a diverse range of worksites, including high locations and within tight internal areas where operating weight is limited or restricted (with counter weight detector).

| Counter weight          |  (Std) |  (-1 layer) |  (-2 layer) |  (-3 layer) |
|-------------------------|---------------------------------------------------------------------------------------------|--------------------------------------------------------------------------------------------------|--------------------------------------------------------------------------------------------------|--------------------------------------------------------------------------------------------------|
| Total operating weight  | 122 t                                                                                       | 114 t                                                                                            | 106 t                                                                                            | 98 t                                                                                             |
| Ground contact pressure | 91 kPa                                                                                      | 85 kPa                                                                                           | 79 kPa                                                                                           | 73 kPa                                                                                           |

Note: Reduction counter weight specifications are only available with crane specifications (excludes crane jib).



A range of options to suit various job types and safety requirements.

# OPTIONAL EQUIPMENT

A comprehensive lineup of optional equipment is available to streamline assembly work and enhance safety on work sites. Equipment is also available for smoother operation and greater comfort.

## Cab

### Swing brake operation pedal

The swing brake operation pedal ensures precise swing control under strong-wind situations.



### Multiple wet-disc type brake

The brake for the free-fall winch (option) uses a multiple wet-disc type that places a premium on controllability during free fall operation. The brake feel is enhanced by a brake valve and hanging brake pedal.



## Upper structure

### Winch rope retainer

Reduces the risk of irregular wire rope winding. Can be installed on front and rear winches.



## Safety

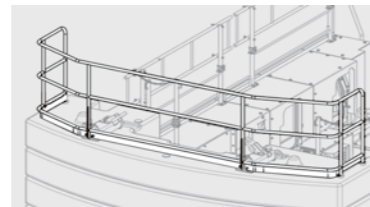
### Drum and rear view monitor system

A drum and rear view monitor system is available to help monitor winching and conditions behind the crane.



### Counter weight handrails

Counter weight handrails can be installed\* on top of the counter weight to enhance safety during inspection work.  
\*Excluding reduction counter weight specifications



### Additional lights

In addition to the standard LED lights, two user-configurable lights are also available to enhance visibility during night operations.



## Skywalk

The 527 mm FRP skywalk is wide enough to ensure safety.



## Efficiency

### Reeving winch

The reeving winch assists with winding the winch wire rope during assembly and disassembly, and makes the process easier and quicker.



### Additional guide sheave

Changing the guide sheave from 2 sheaves to 3 sheaves allows for combined operations with the use of the 3<sup>rd</sup> winch, to enhance work efficiency.

Greater safety and stability for machines working non-stop.

## REMOTE SENSING



### REMOTE SENSING as a watchful eye on the machine

Information on operating machines can be viewed at any time over the internet. Accurate data on operating conditions and parts replacement status help to reduce downtime and boost operating efficiency. The system also helps to cut maintenance time and costs with comprehensive machine management.



Map view



Maintenance data

Photos are for illustration purposes and may differ to actual products.

