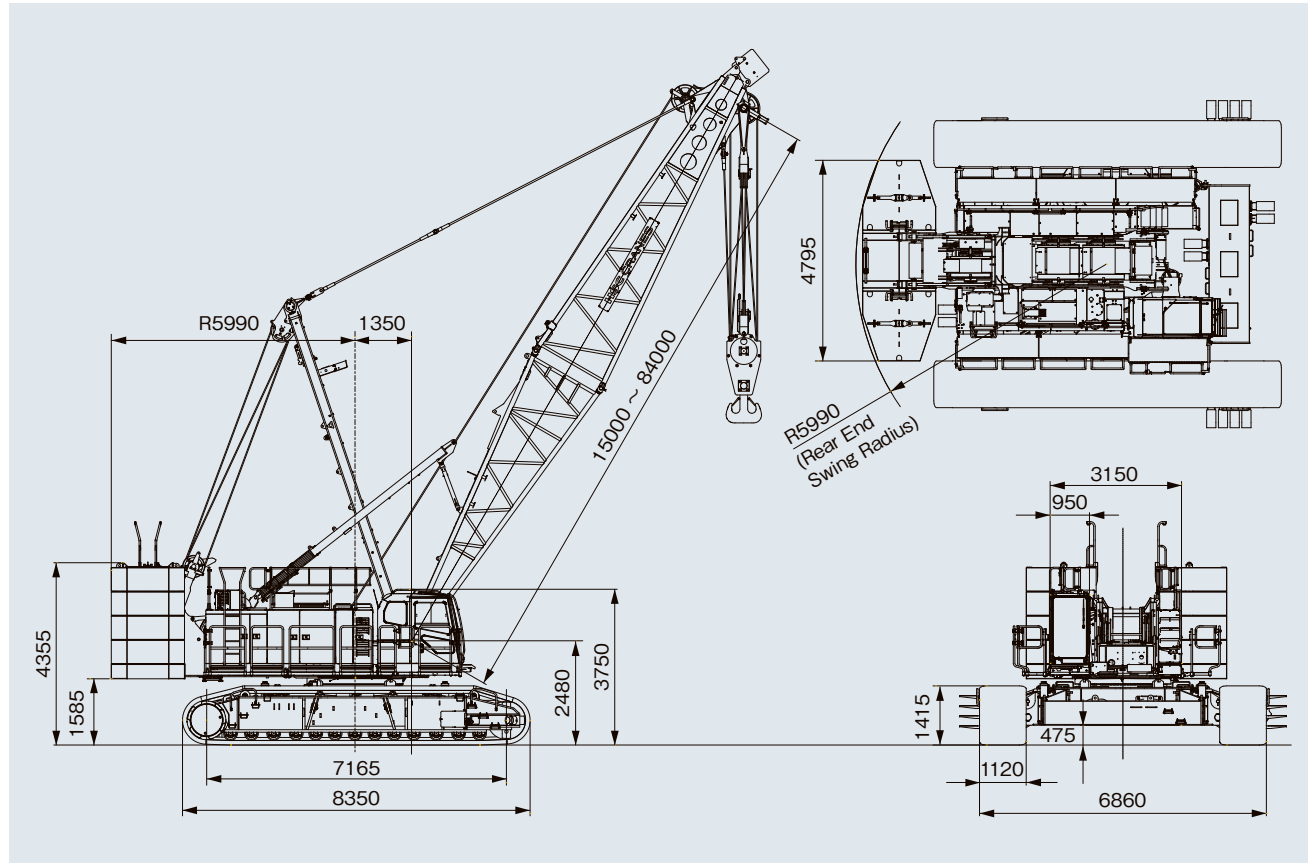




■ General dimensions

Units: mm



■ Specifications

Model		SCX1800A-3	
Application		Liftcrane	
		With Heavy Duty Top	With STD Top
Max. lifting capacity	t × m	175 / 180 x 4.1 *1	160 x 4.5
Basic boom length (with heavy duty top)	m	12	—
Basic boom length (with STD top)	m	—	15 (21 with auxiliary sheave)
Max. boom length	m	—	84 (78 with auxiliary sheave)
Crane jib length	m	—	13~31
Max. boom + crane jib length	m	—	75 + 31
Rope line speeds *2	Front/rear main drum (rated with 12 t load)	m/min	110 (45)
	Boom hoist drum	m/min	44
Swing speed	min ⁻¹ (rpm)	1.8 (1.8)	1.8 (1.8)
Travel speed*3 high/low	km/h	1.1 / 0.6	1.1 / 0.6
Gradeability	% (°)	30 (17)	30 (17)
Engine	Make & model	Cummins B6.7 (EU Stage V)	
	Max. output	kW/min ⁻¹ (PS/rpm)	209/2,000 (284/2,000)
Ground contact pressure *4	kPa (kgf/cm ²)	104 (1.06)	103 (1.05)
		w/basic boom,175 t hook block	w/basic boom,160 t hook block
Operating weight *4	t	169	169
		w/basic boom,175 t hook block	w/basic boom,160 t hook block

Notes: 1. 180 t lifting capacity is limited edition, and requires special equipment (*1). 2. Rope line speeds vary under load and operating conditions (*2). 3. Travel speed is based on flat, level and firm supporting surface with no load and basic boom (*3). 4. Handrail (folding type), with catwalk (*4).

- We are constantly improving our products and therefore reserve the right to change designs and specifications without notice.
- Units in this catalog are shown under International System of Units (SI). The figures in parenthesis are under the older British Gravitational System of Units.
- Illustrations may include optional equipment and accessories, and may not include all standard equipment.
- Standard equipment and accessories may vary by country and region.

Sumitomo Heavy Industries Construction Cranes Co., Ltd. has been abbreviated as "HSC" throughout this catalog. "HSC CRANES" is a brand of Sumitomo Heavy Industries Construction Cranes Co., Ltd.

Address inquiries to :

Sumitomo Heavy Industries Construction Cranes Co., Ltd.
 9-3, Higashi-Ueno 6-chome, Taito-ku, Tokyo 110-0015, Japan
 Phone: 81-3-3845-1387 Facsimile: 81-3-3845-1394
<http://www.hsc-cranes.com>

Printed in Japan
 2306®05H.EA390

**SCX
 1800A-3**



Progress for Tomorrow Safer and Cleaner Today

Making jobsites, society and the world better is why we continually update our machines. The new SCX1800A-3 for tomorrow represents HSC's underlying inspiration.



SCX 1800A-3



Photos may include optional items.



New 12.1-inch Monitor **Touch Monitor**

User-friendly and extraordinary safety with large, touch-screen monitor

EU Stage V Compliant Engine **Eco & Clean**

World-leading low gas emissions and superb efficiency from innovative, eco-friendly power



New monitor designed for user-friendly operations and safety.

CONTROL SAFETY

The new monitor with moment limiter (M/L) provides smooth control with outstanding touch-screen usability, with the large 12.1-inch display ensuring excellent visibility. User-friendly operational safety is a key design element of the new monitor.



Touch panel for intuitive control

Simply follow the leads on the screen to intuitively select functions and enter parameters. The screen layout ensures faster, more accurate control for even safer operations.



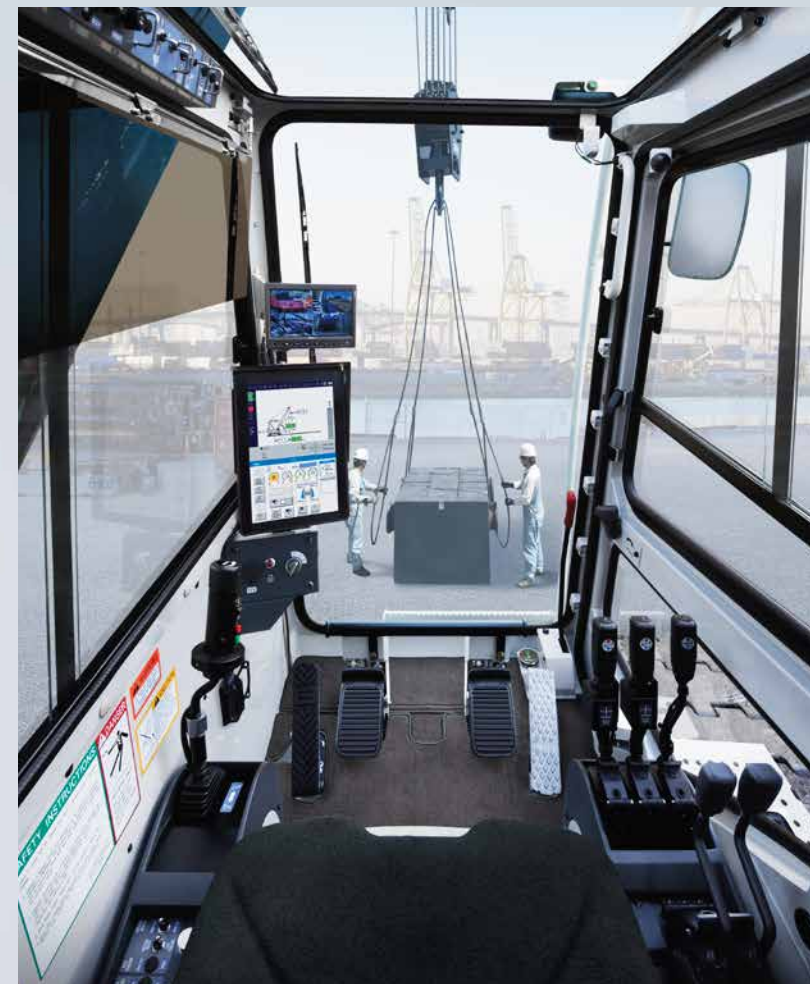
Greater operating margin with data-rich display

Essential machine data can be viewed instantly with the graphical displays. Key information can be displayed in full, and interactive data communication assists operators in ensuring work is kept safe. Every aspect of the layout is designed for safety, like simply tapping warning icons to bring up more details.

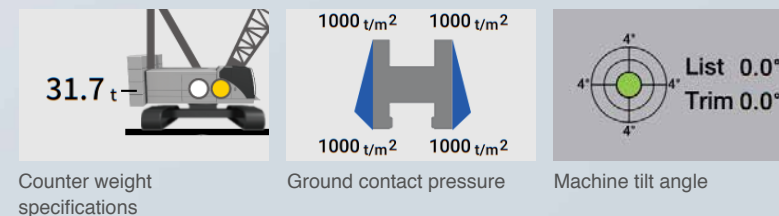


Example of warning message

The image of the monitor is for illustration purposes. Figures, values and other details may differ to the actual product.



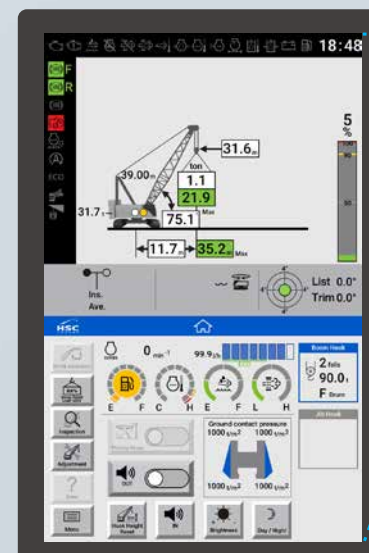
Key data at a glance – graphical display of crane collapsing risk for greater stability



Counter weight specifications

Ground contact pressure

Machine tilt angle



8-inch monitor of previous model

225% area ratio

Large 12.1-inch monitor

Frequently viewed data is organized at the top of the large portrait-mode monitor. The widescreen layout provides abundant meter info and operating conditions, giving operators both a multi-functional, and multi-display design.



More comfortable operator seat

The operator's seat provides superior comfort—the lower headrest caters to operators wearing helmets, while a new seat heater further increases comfort during work.



Insulated roof window glass

New insulating glass has been used for the roof window to shut out more than 90% of UV and mid-infrared light. This helps to prevent sunburn and ensure a more comfortable working space by limiting the rise in temperature.

Swing restriction unit OPTION

Features a swing range alarm and automatic stop function. This option is designed to reduce the risk of accidents involving contact with objects, making work easier on confined sites.



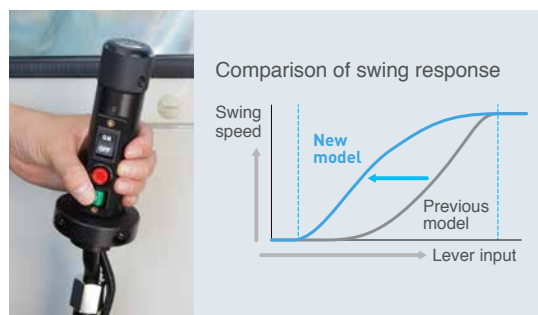
Radio with Bluetooth®

* The Bluetooth® work mark and logos are registered trademarks owned by Bluetooth SIG, Inc.
* European specification only.

High-precision operations made smooth and easy.

PERFORMANCE

The SCX1800A-3 is designed with ample performance capability to deliver outstanding operating precision and efficiency. Jobs are smoother and easier with the increase in swing response.



Better swing response

Play in the swing lever has been further reduced, thereby improving movement when initially responding to lever input, and providing better swing response overall. This makes it easier to adjust positions and keep the boom stable, while less lever input also helps to reduce operator fatigue.

Better synchronous winch operation (for 13.5 t rated winch only)

Improved hydraulic circuits and optional monitoring with a rotation sensor provide greater synchronous movement of the front and rear winches. This significantly enhances work like hammer grab operations.



Front and rear winches

The standard 12 t-rated line pull winch is designed to cater to heavy duty work and simultaneous movements. Using this in tandem with the optional brake results in a better operating feel and excellent operating performance.

13.5 t-rated winch OPTION

A powerful 13.5 t-rated line pull winch (rope $\phi 28$ mm) is also available to ensure stable operations on tough jobs.



Centralized control dials

Control dials are located in a central position on the left-side stand of the cabin. In addition to hoisting, lowering, swinging, and boom speed control, this layout makes easy to synchronize primary and auxiliary operation.

Auxiliary sheave (2 sheaves) OPTION

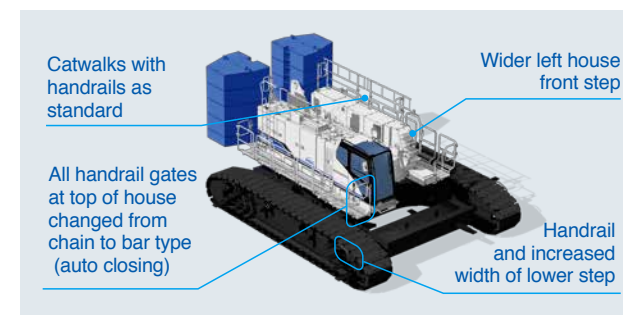
Lifting capabilities can be doubled over one auxiliary sheave by selecting the two-auxiliary sheave option, to suit a broad range of work requirements (set with standard boom, boom length at 21 to 78 m).

Note: Auxiliary sheaves are available in 1-sheave and 2-sheave types.

Smart and logical transportation and assembly.

TRANSPORTABILITY

Designed for both reliable crane performance and smart transportation. Exceptional assembly and disassembly as well as smart transportation options for reducing costs further boost capabilities on any work site.



Safer and smoother access

Catwalks with handrails are now included as standard. Other changes to further enhance accessibility include a handrail added to the lower step, wider front step on the left of the house, and the use of bar type gates. Better accessibility ensures the utmost safety for all personnel working on job sites.

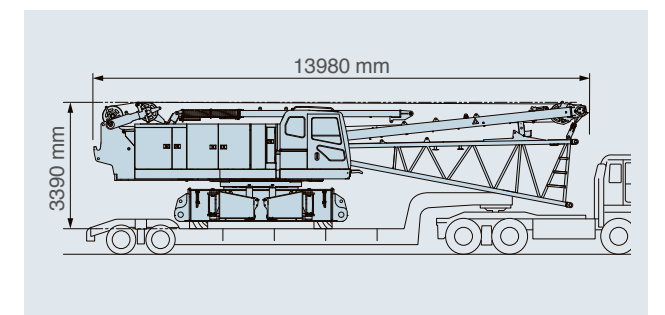
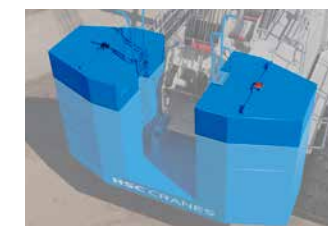
Note: Catwalks with no handrails are also available.

Identically shaped counter weights

The symmetrical design of the counter weights (excluding the base counter weight) makes the assembly process much quicker by allowing weights to be stacked in any order on either side.

Each weight is also lower to allow the boom insert to be transported together.

Note: Transportation must comply with the relevant regulations of each country.







Transportation weight of 40.8 t

The total weight during transportation—including the lower boom, winch rope and mast—has been kept to 40.8 t (crane body itself at 27.6 t), while also remaining within a 3.2 m transportation width.

Reduction counter weight specification OPTION

Reduction counter weight specifications are available as an optional extra to provide added flexibility for a diverse range of worksites, including high locations and within tight internal areas where operating weight is limited or restricted (with counter weight detector).

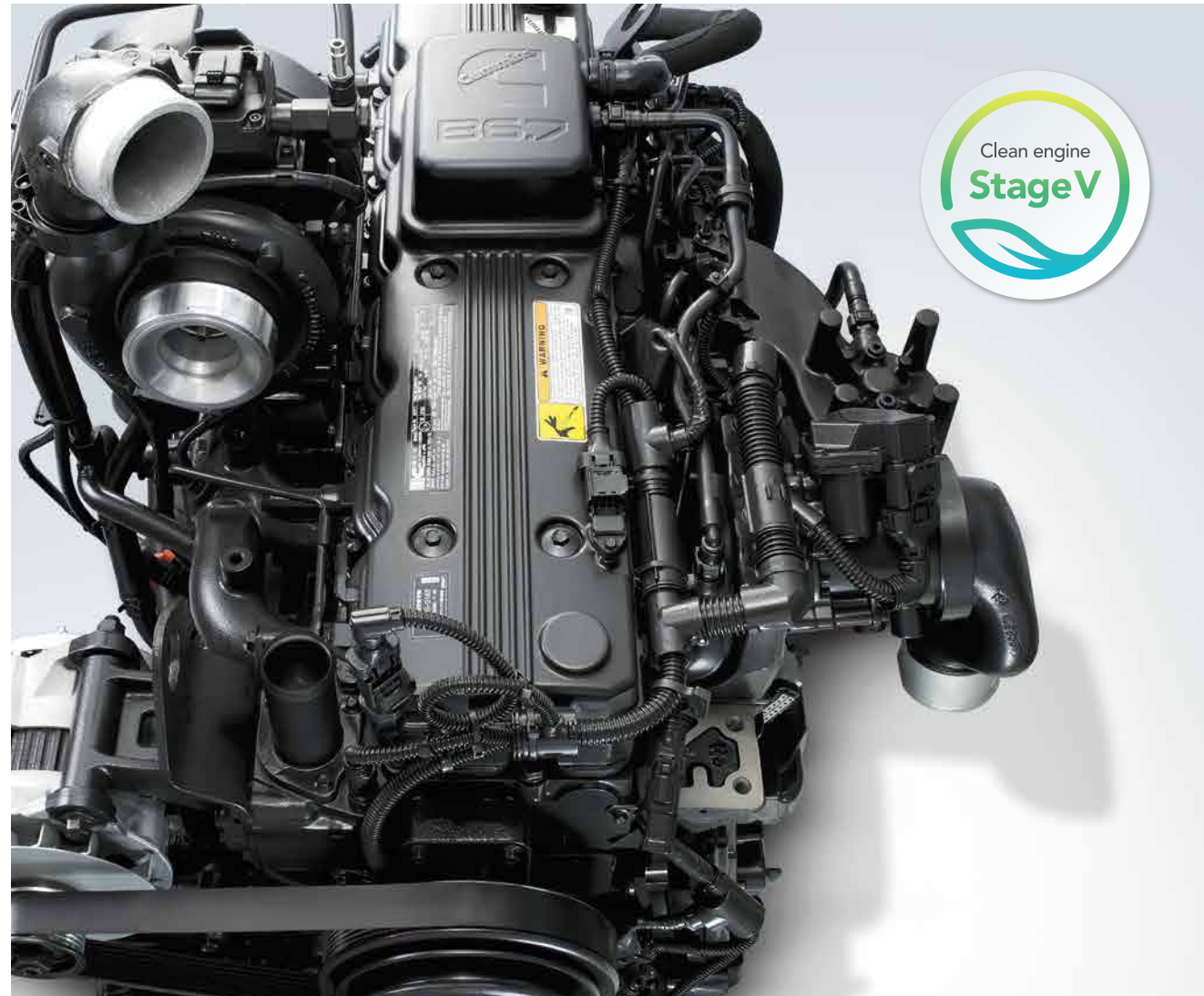
Counter weight	 Std	 -1 layer	 -2 layers	 -3 layers
Total operating weight	169 / 169 t	155 t	141 t	127 t
Ground contact pressure	104 / 103 kPa	95 kPa	86 kPa	78 kPa

Note: Reduction counter weight specifications are only available with crane specifications (excludes crane jib).

EU Stage V compliant engine for a cleaner tomorrow.

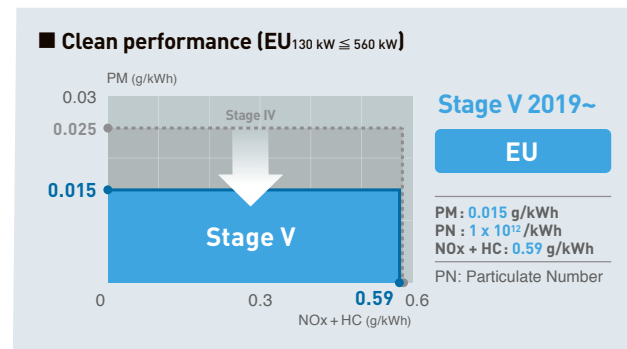
ADVANCED ECOLOGY

Powered with an EU Stage V compliant clean engine designed for world-leading eco-friendly operation. Outstanding clean-running performance and greater efficiency for lower CO₂ emissions help build a more sustainable society and a cleaner tomorrow.



World-leading crane now even cleaner

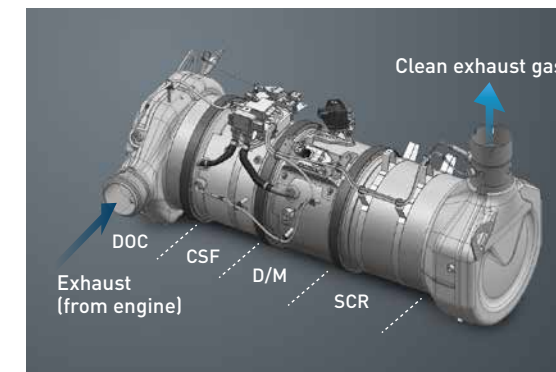
The combination of the efficient clean-running engine and advanced ATS system simultaneously achieves superior operating efficiency, high level of power and the world highest standard exhaust gas emissions.



Stage V includes newly proposed limits on particle number.

ATS system (exhaust gas after treatment system)

An ATS system is included, featuring a ceramic filter and Urea SCR for after treatment of PM and NO_x in the exhaust gas. The system gives the engine high-efficiency combustion as well as outstanding fuel efficiency and clean exhaust gas.



* Use AdBlue® aqueous solution required for the Urea SCR (or a urea aqueous solution that complies with JIS or ISO standards). The SCX1800A-3 requires AdBlue® to be refilled once every two times the machine is refuelled. AdBlue® is a registered trademark of the German Association of the Automotive Industry.

Designed for ease of maintenance

The elimination of EGR improves engine reliability and also means the fuel filter needs to be replaced less often. A large Urea tank has also been used for longer refilling intervals.



Compatible with biodiesel

The engine can also run on biodiesel and other BDF or HVO.

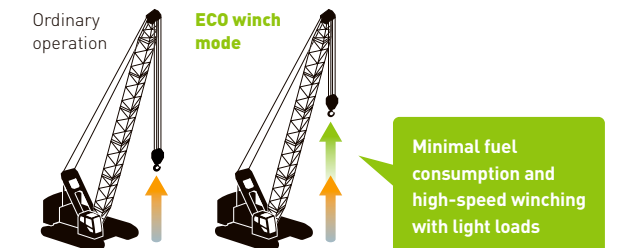
Note: Use HVO that meets European specification EN15940. BDF: Bio Diesel Fuel HVO: Hydrotreated Vegetable Oil Contact our distributor for more details.



Other eco-friendly technology to save energy

ECO winch mode

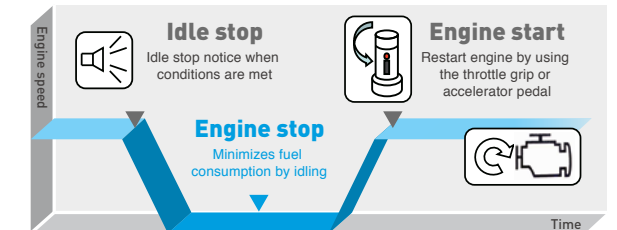
Light loads involving only hook operations benefit from ECO winch mode for high-speed hoisting and lowering while maintaining low engine speeds.



Automatically goes to ECO winch mode if the switch ON and required conditions are present (hook-only operation, low engine speed).

Auto idle stop function

Auto idle stop function included as standard to automatically stop the engine idling unnecessarily, which helps reduce fuel wastage during work.



A range of options to suit various job types and safety requirements.

OPTIONAL EQUIPMENT

A comprehensive lineup of optional equipment is available to streamline assembly work and enhance safety on work sites. Equipment is also available for smoother operation and greater comfort.

Efficiency

Reeving winch

The reeving winch assists with winding the winch wire rope during assembly and disassembly, and makes the process easier and quicker.



Cab

Swing brake operation pedal

The swing brake operation pedal ensures precise swing control under strong-wind situations.



Multiple wet-disc type brake

The brake for the free-fall winch (option) uses a multiple wet-disc type that places a premium on controllability during free fall operation. The brake feel is enhanced by a brake valve and hanging brake pedal.



Safety

Drum and rear view monitor system

A drum and rear view monitor system is available to help monitor winching and conditions behind the crane.



Additional lights

In addition to the standard LED lights, two user-configurable lights are also available to enhance visibility during night operations.



Skywalk

The 527 mm FRP skywalk is wide enough to ensure safety.



Photos and illustrations may differ to actual products.

Greater safety and stability for machines working non-stop.

REMOTE SENSING



REMOTE SENSING as a watchful eye on the machine

Information on operating machines can be viewed at any time over the internet. Accurate data on operating conditions and parts replacement status help to reduce downtime and boost operating efficiency. The system also helps to cut maintenance time and costs with comprehensive machine management.



Map view



Maintenance data

Photos are for illustration purposes and may differ to actual products.

